





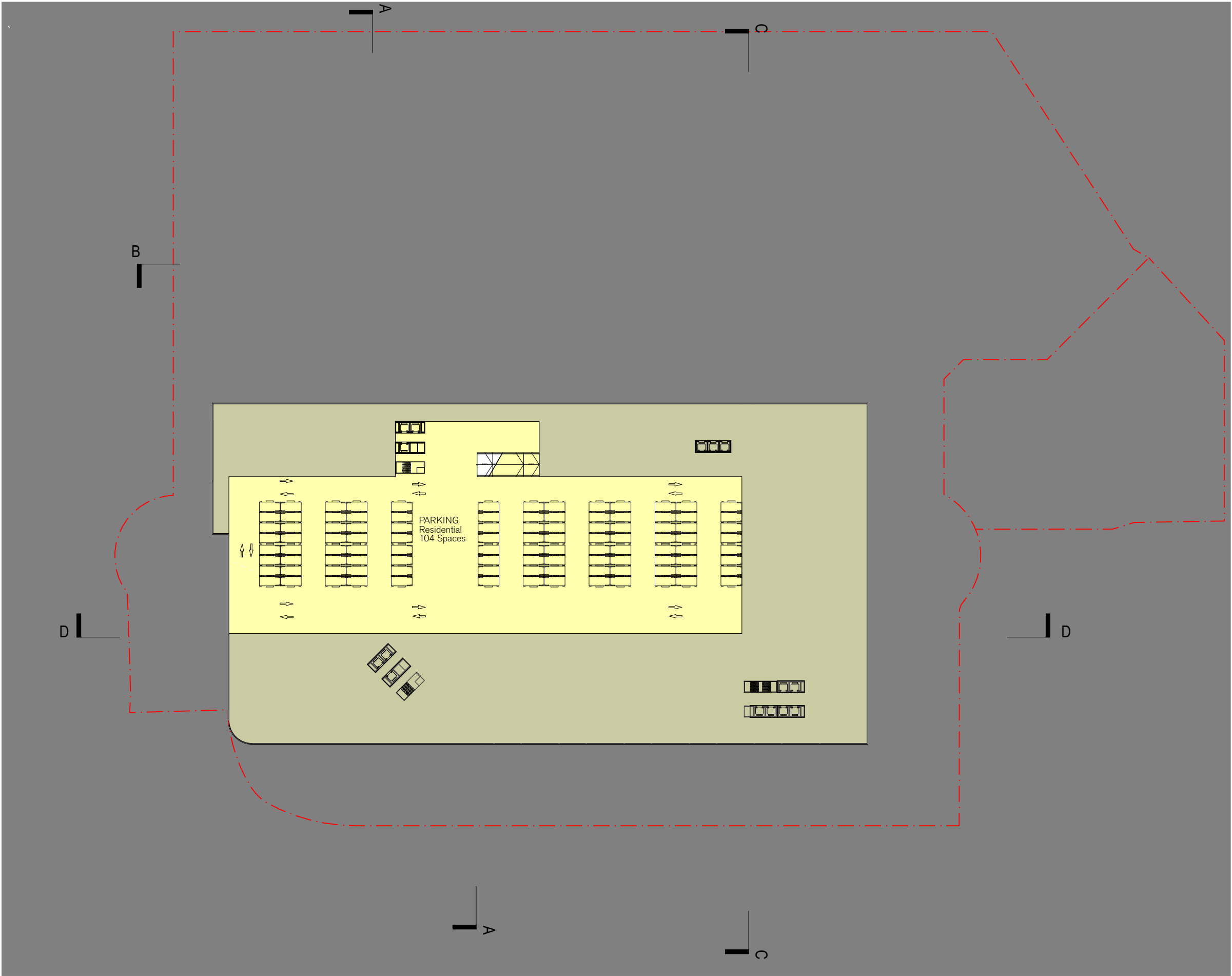
# Architectural Drawings

**Architectural Drawing List**

20B6	Level - 6 Residential Parking
20B5	Level - 5 Residential Parking
20B4	Level - 4 Commercial Parking
20B3	Level - 3 Loading Dock
20B2	Level Mezzanine - 2 Car park
20B1	Indicative Lower Ground Level Plan
2000	Indicative Ground Level Plan
2001	Typical Podium Level Plan
2004	Typical Apartment Floor Plan
3001	Building Separation - Podium
3000	Building Separation - Tower
4001	Section A
4002	Section B
4003	Section C
4004	Section D
1201	Shadow Study 21 June a.m.
1202	Shadow Study 21 June p.m.

Project Name		Norwest Marketown	
Project Code		MNW	
Document Name		Drawing Set	
Document ID		230831 Norwest Marketown Drawing Set	
Revision	Date	Comment	Approved
-	31/08/23	For Submission	DH



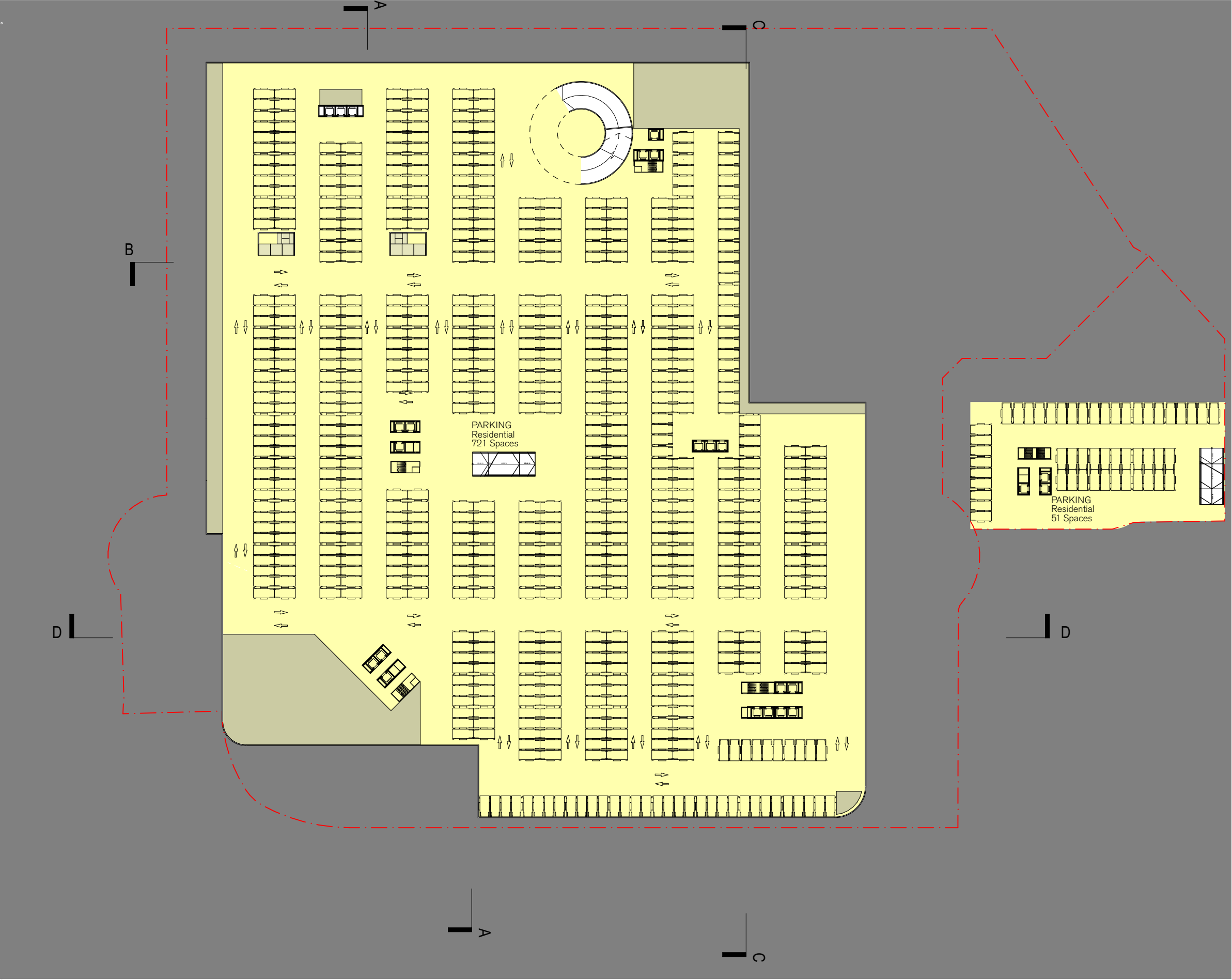







**LEGEND**

	RESIDENTIAL PARKING
	POOL / GYMNASIUM / SPORT & CHILD CARE FACILITY PARKING
	COMMERCIAL PARKING
	SERVICE APARTMENTS PARKING
	RETAIL PARKING

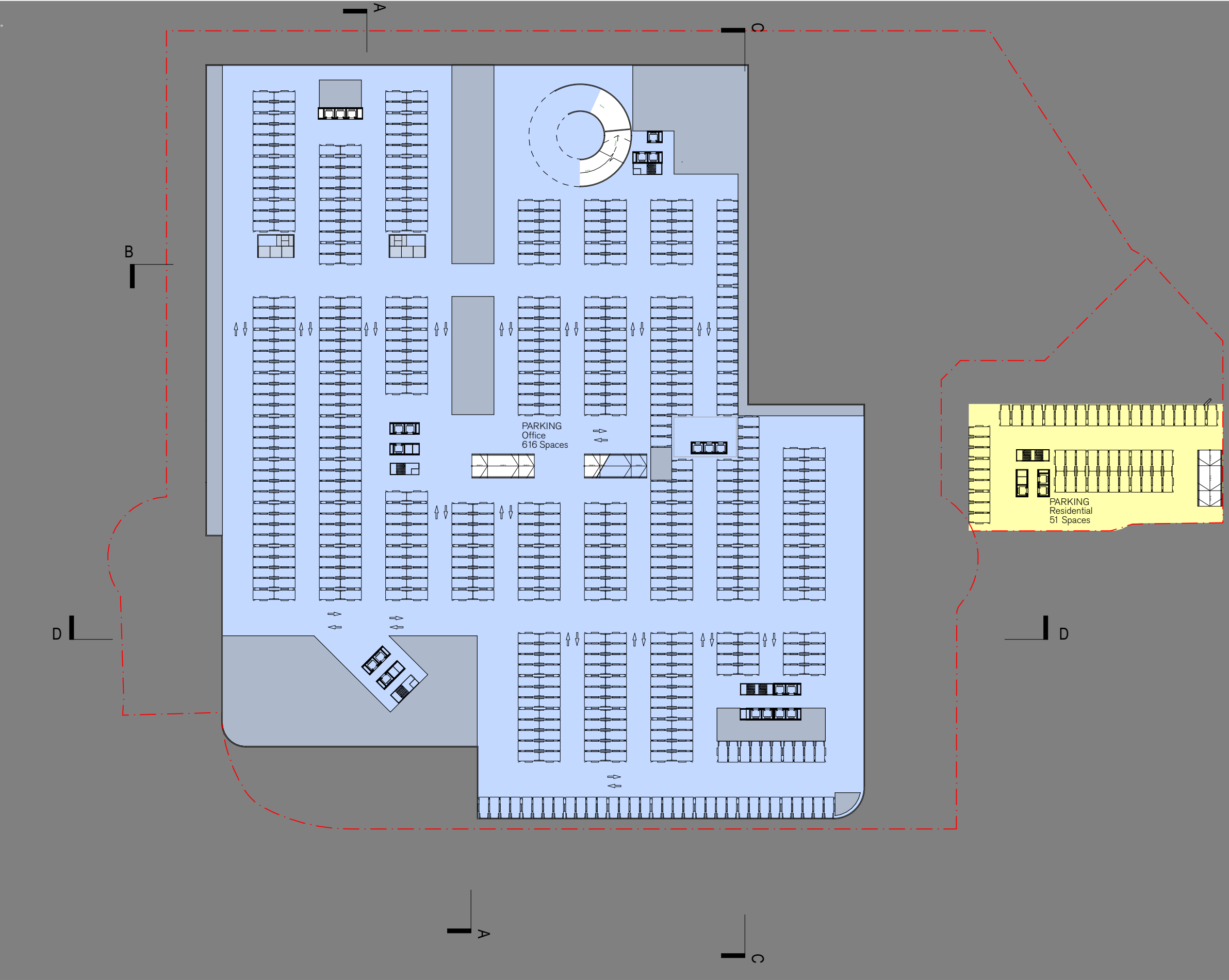






LEGEND	
	RESIDENTIAL PARKING
	POOL/ GYMNASIUM / SPORT & CHILD CARE FACILITY PARKING
	COMMERCIAL PARKING
	SERVICE APARTMENTS PARKING
	RETAIL PARKING

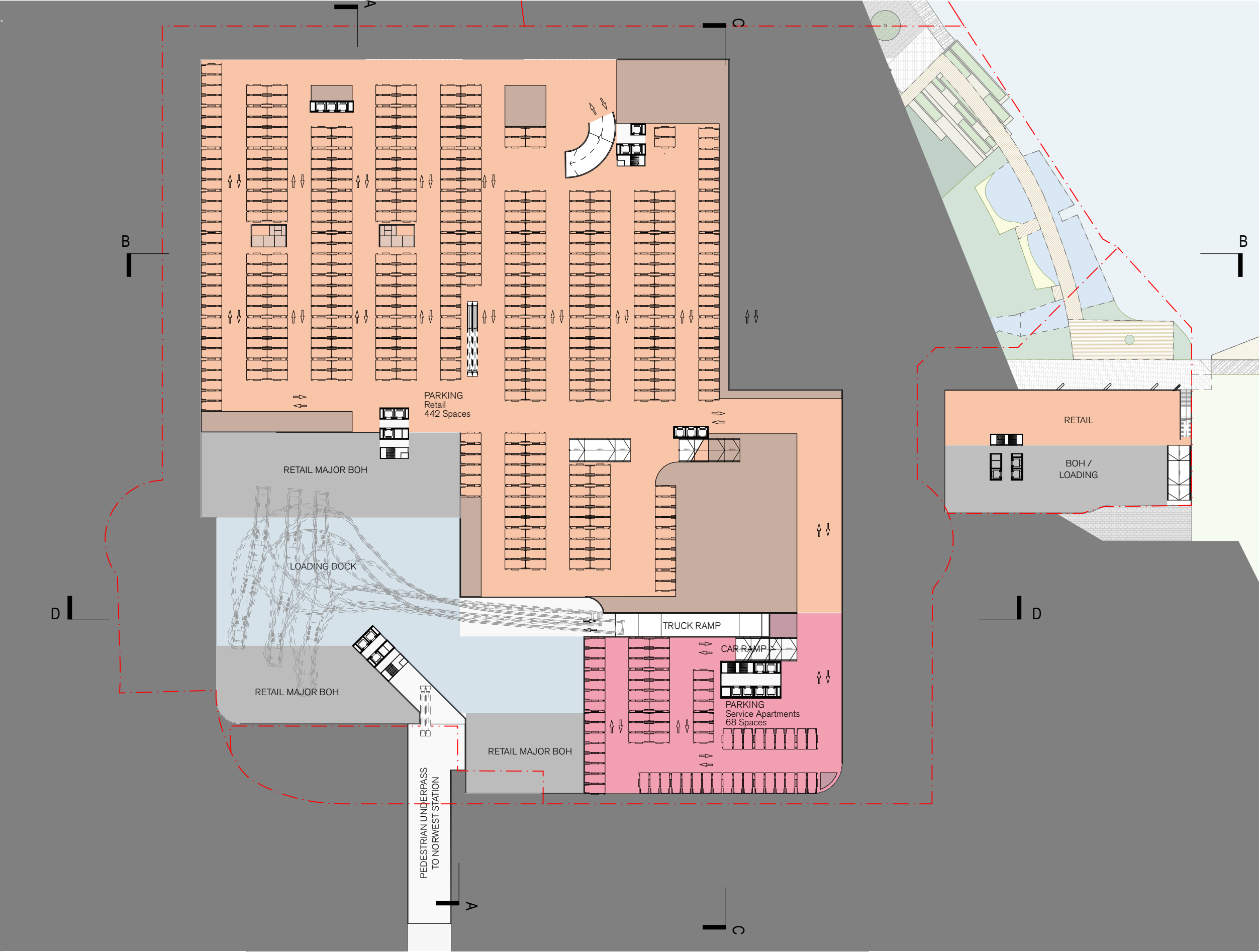




**LEGEND**

	RESIDENTIAL PARKING
	POOL/ GYMNASIUM / SPORT & CHILD CARE FACILITY PARKING
	COMMERCIAL PARKING
	SERVICE APARTMENTS PARKING
	RETAIL PARKING

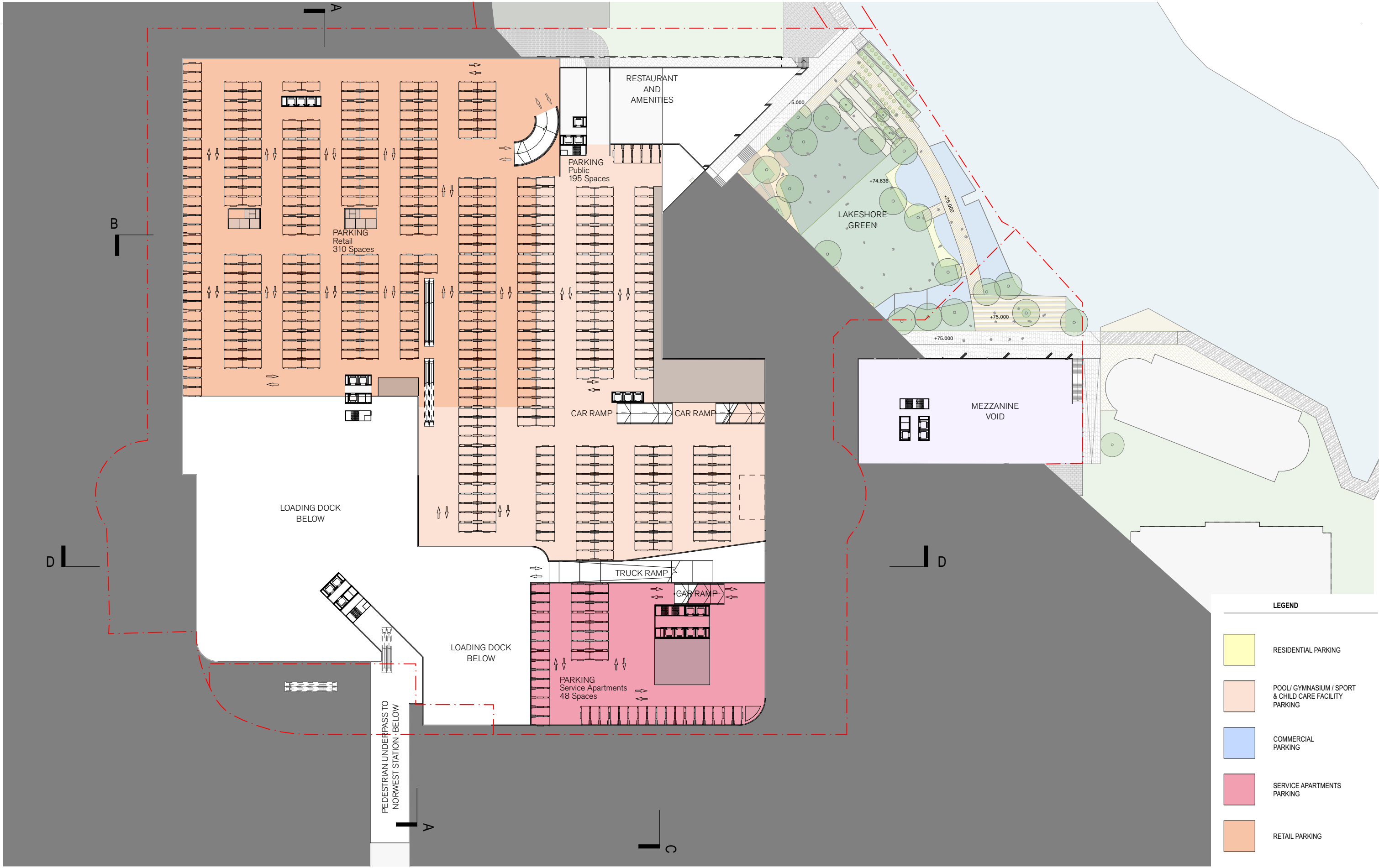




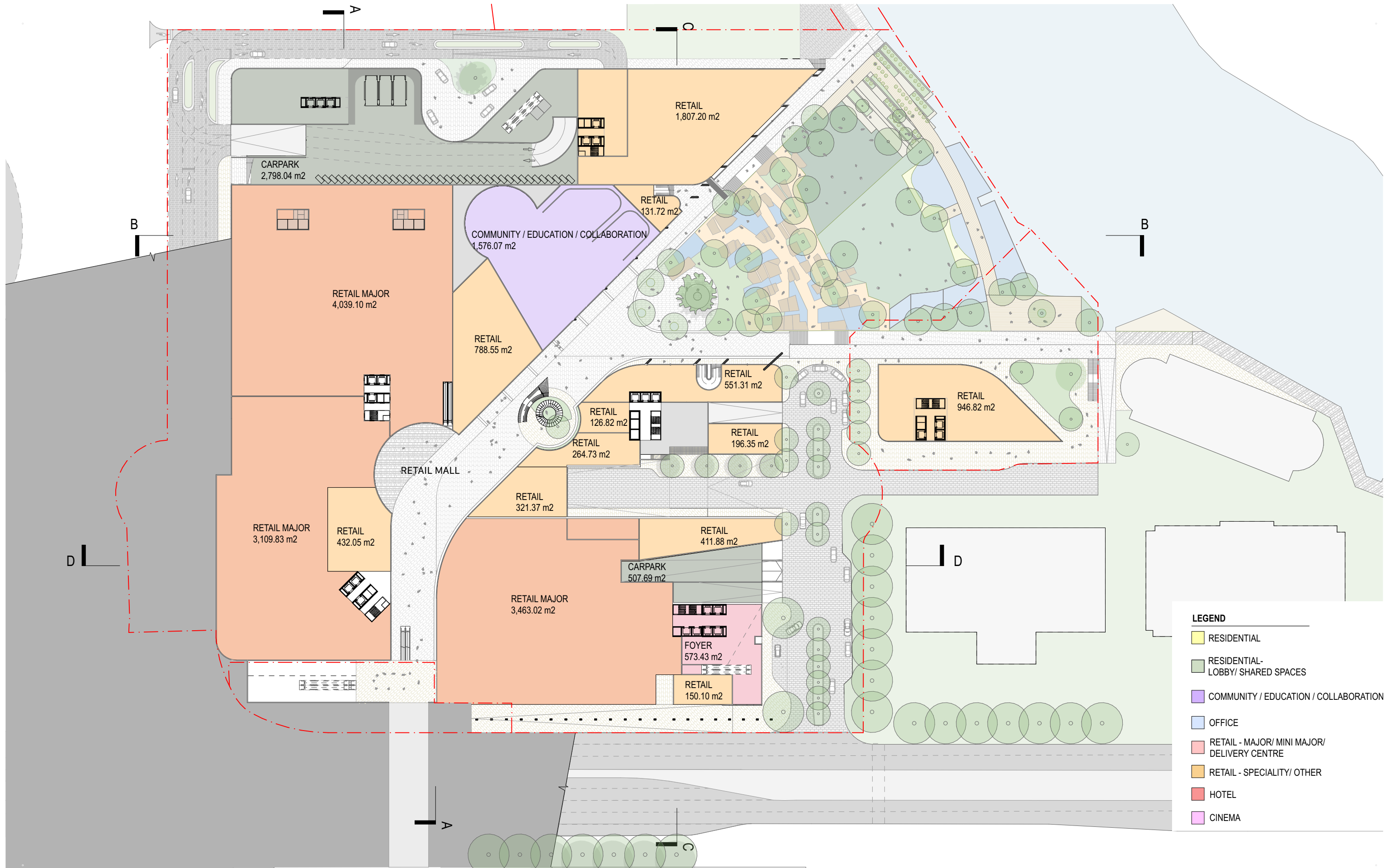
**LEGEND**

- RESIDENTIAL PARKING
- POOL/ GYMNASIUM / SPORT & CHILD CARE FACILITY PARKING
- COMMERCIAL PARKING
- SERVICE APARTMENTS PARKING
- RETAIL PARKING

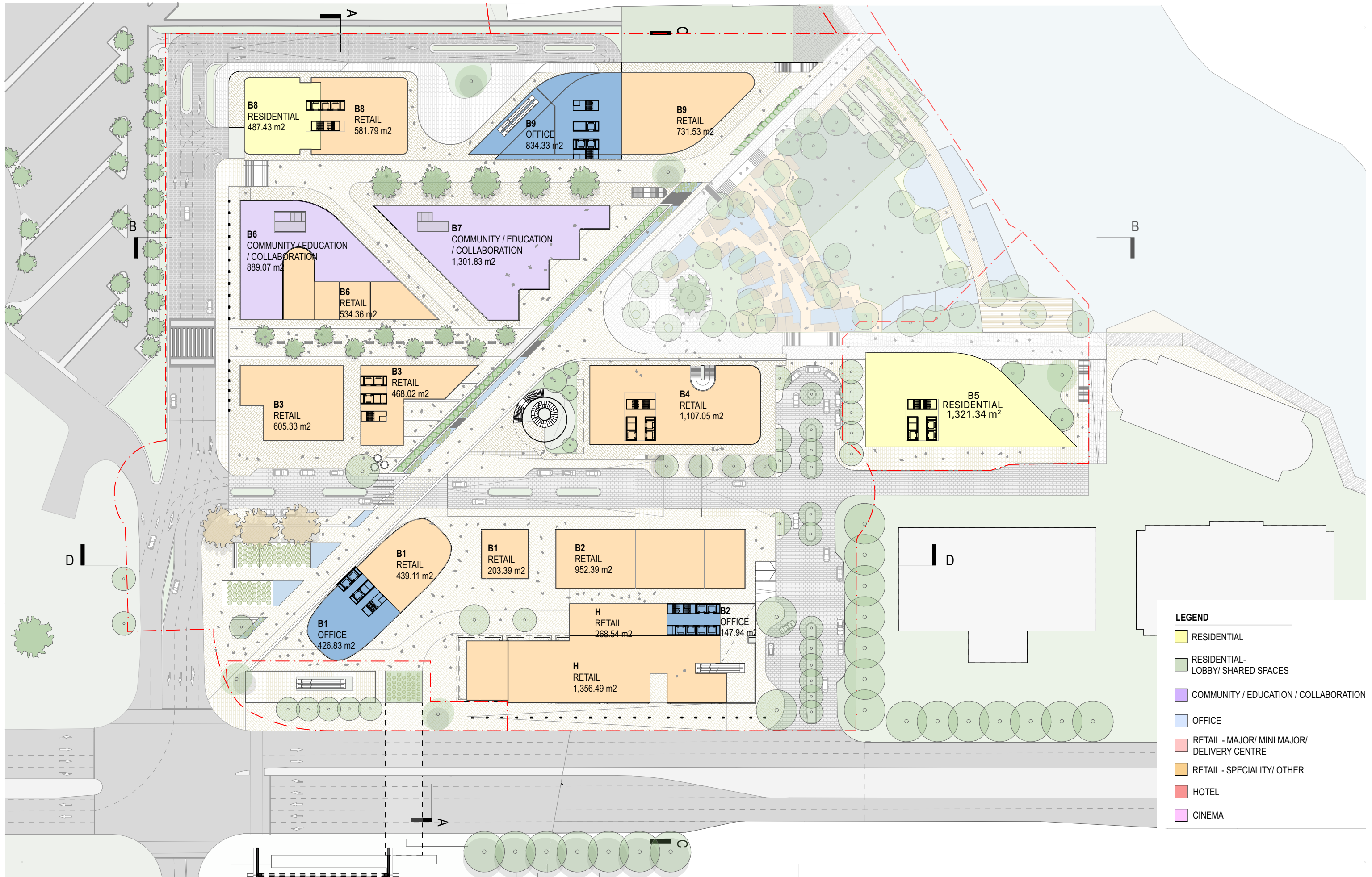












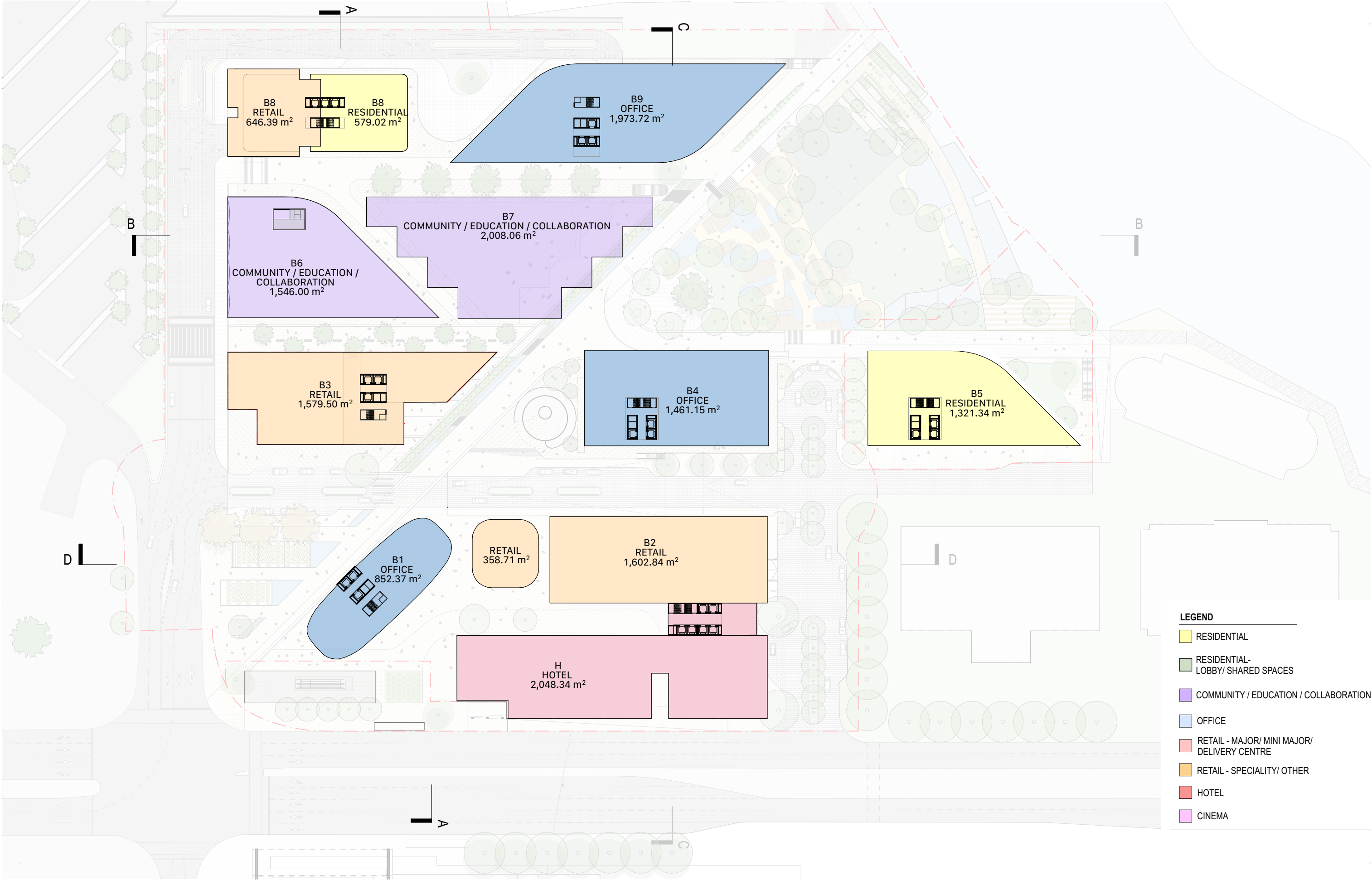
2000 — Indicative Ground Level Plan  
MULPHA — NORWEST

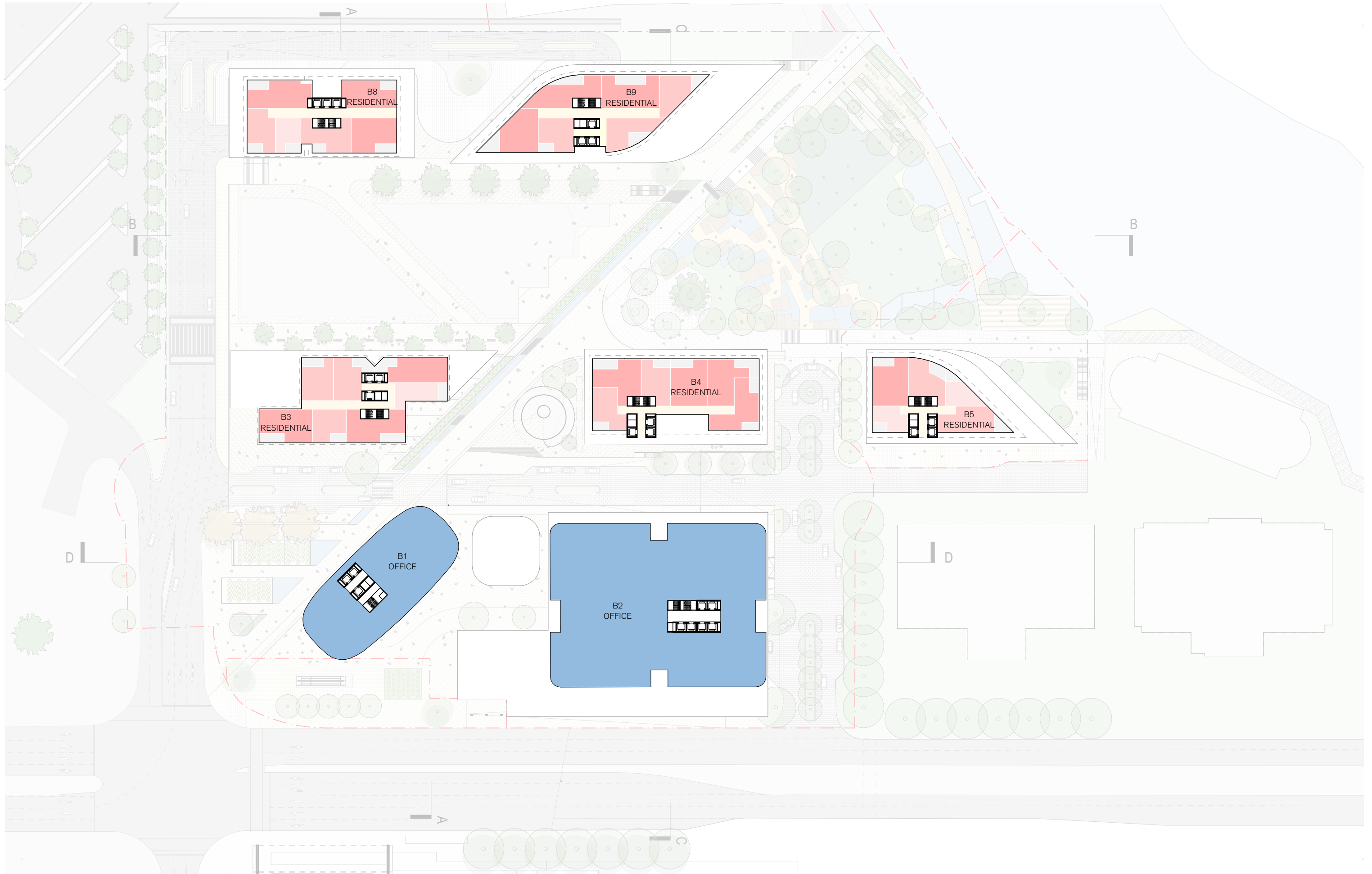
Scale  
1:1000 @ A3



1/8/2023







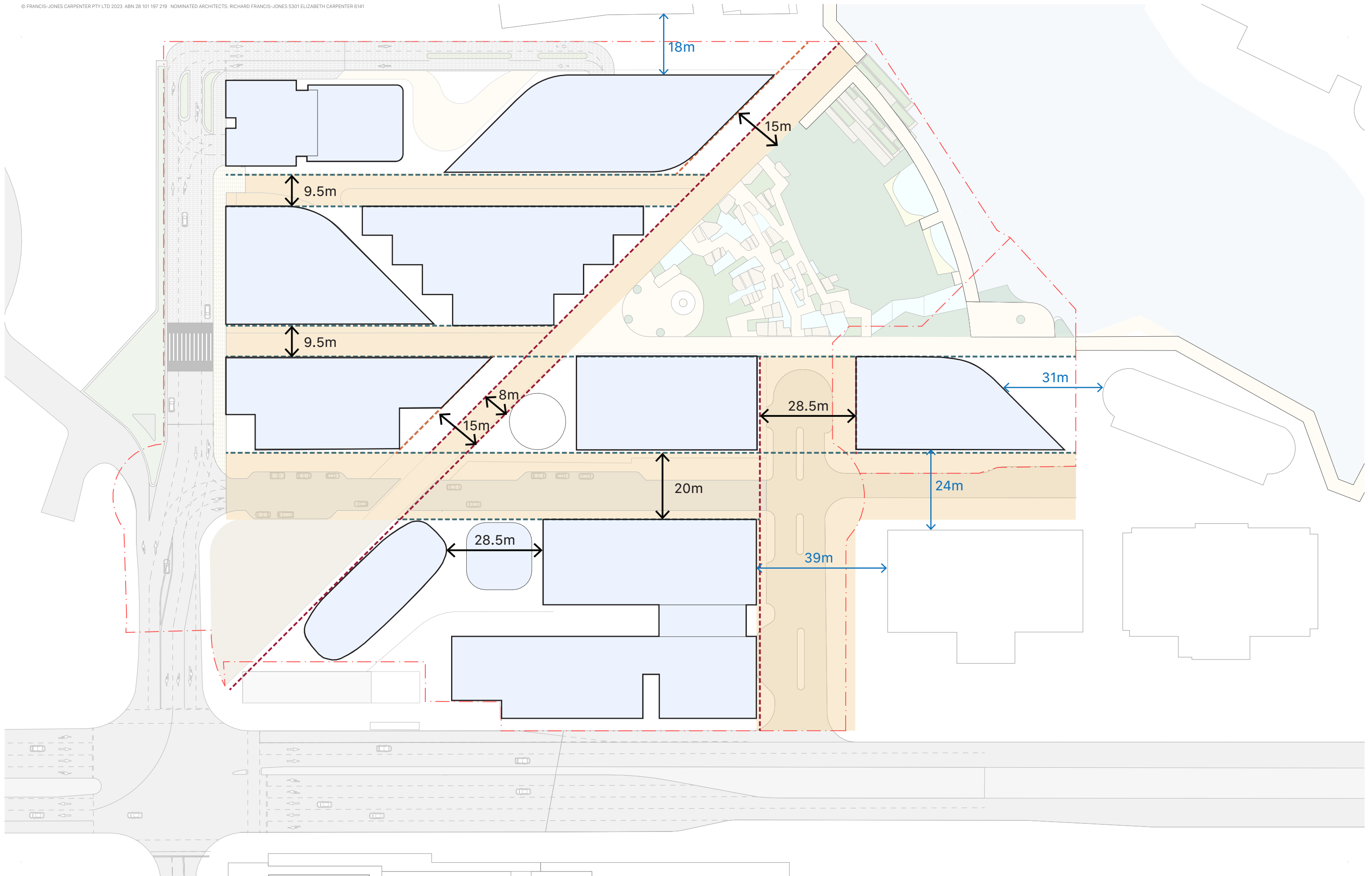
1/8/2023

2004 — Typical Apartment Floor Plan  
MULPHA — NORWEST

Scale  
1:1000 @ A3





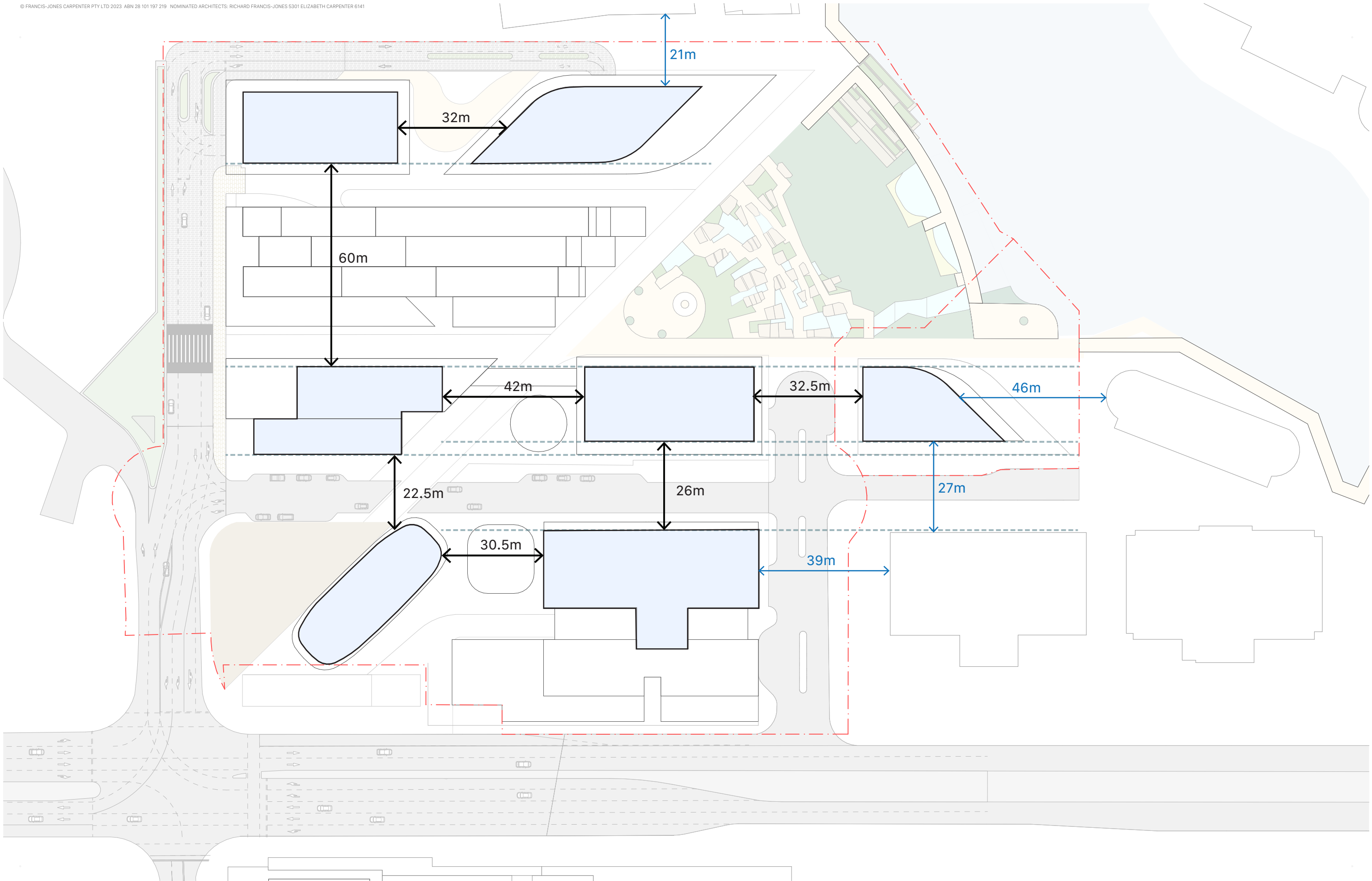


3001 — Building Separation - Podium  
MULPHA — NORWEST

Scale  
1:1000 @ A3



27/7/2023



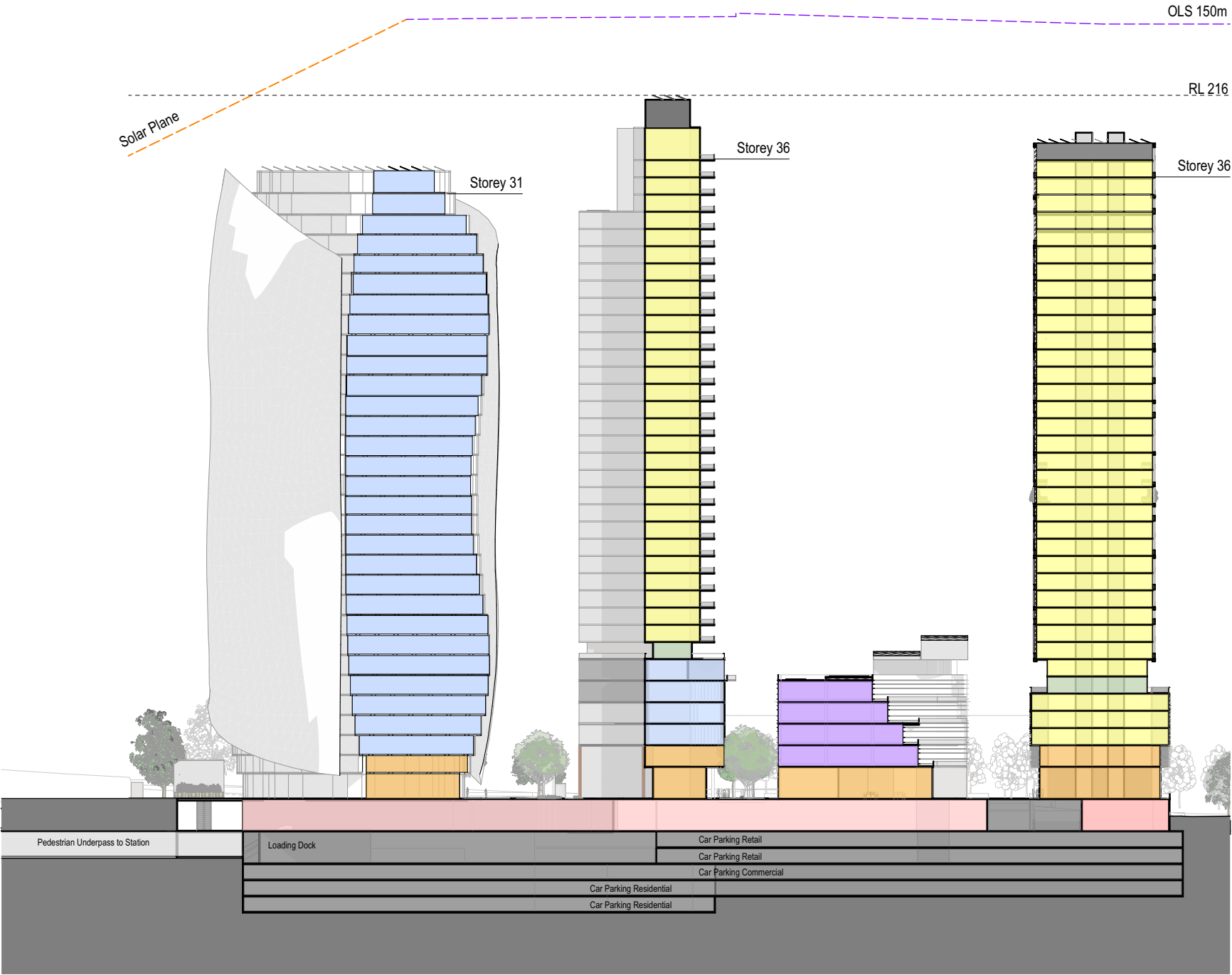
3000 — Building Separation  
MULPHA — NORWEST

Scale  
1:1000 @ A3

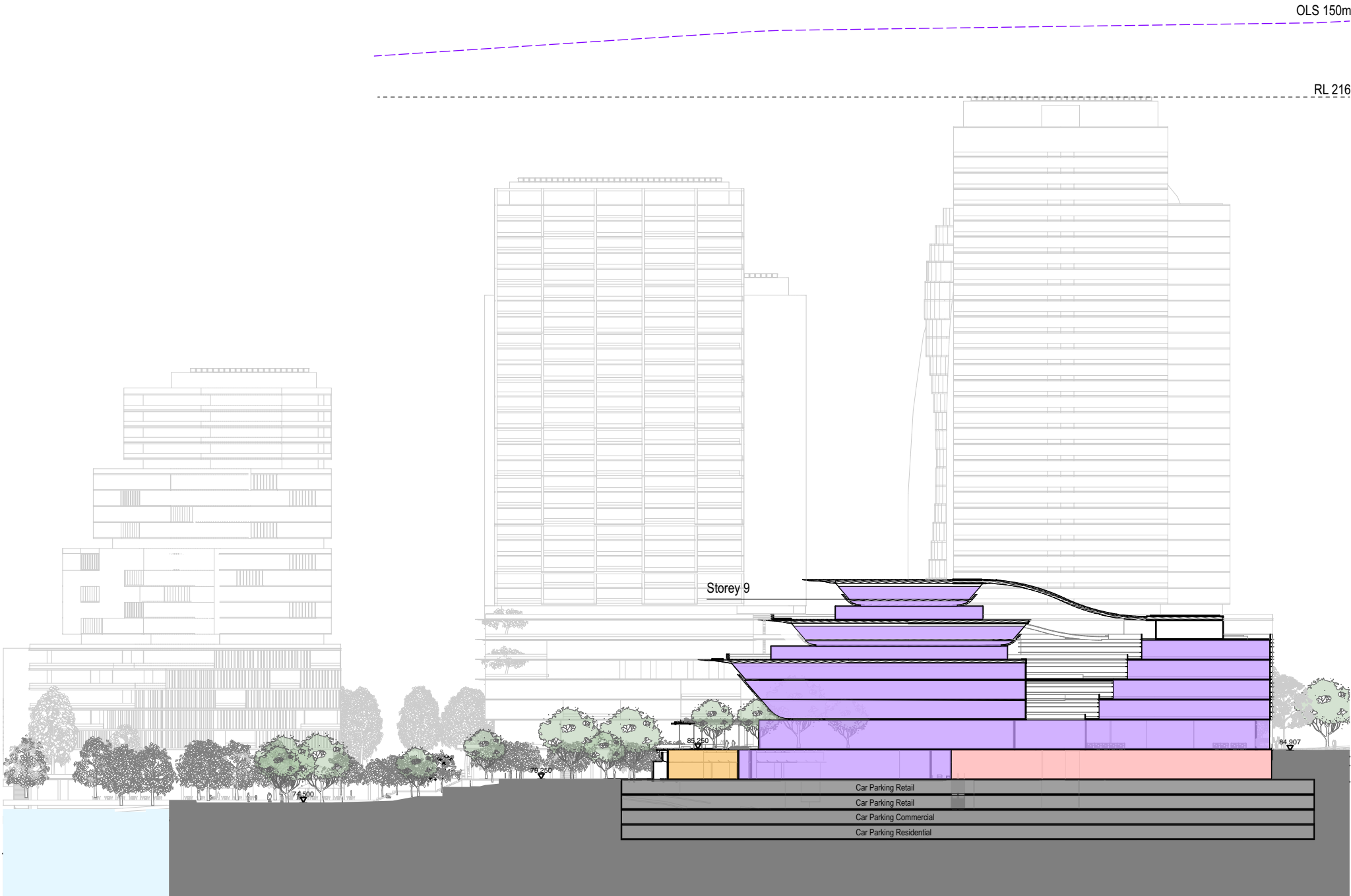


27/7/2023





- LEGEND**
- RESIDENTIAL
  - RESIDENTIAL-LOBBY/ SHARED SPACES
  - COMMUNITY / EDUCATION / COLLABORATION
  - OFFICE
  - RETAIL - MAJOR/ MINI MAJOR/ DELIVERY CENTRE
  - RETAIL - SPECIALITY/ OTHER
  - HOTEL

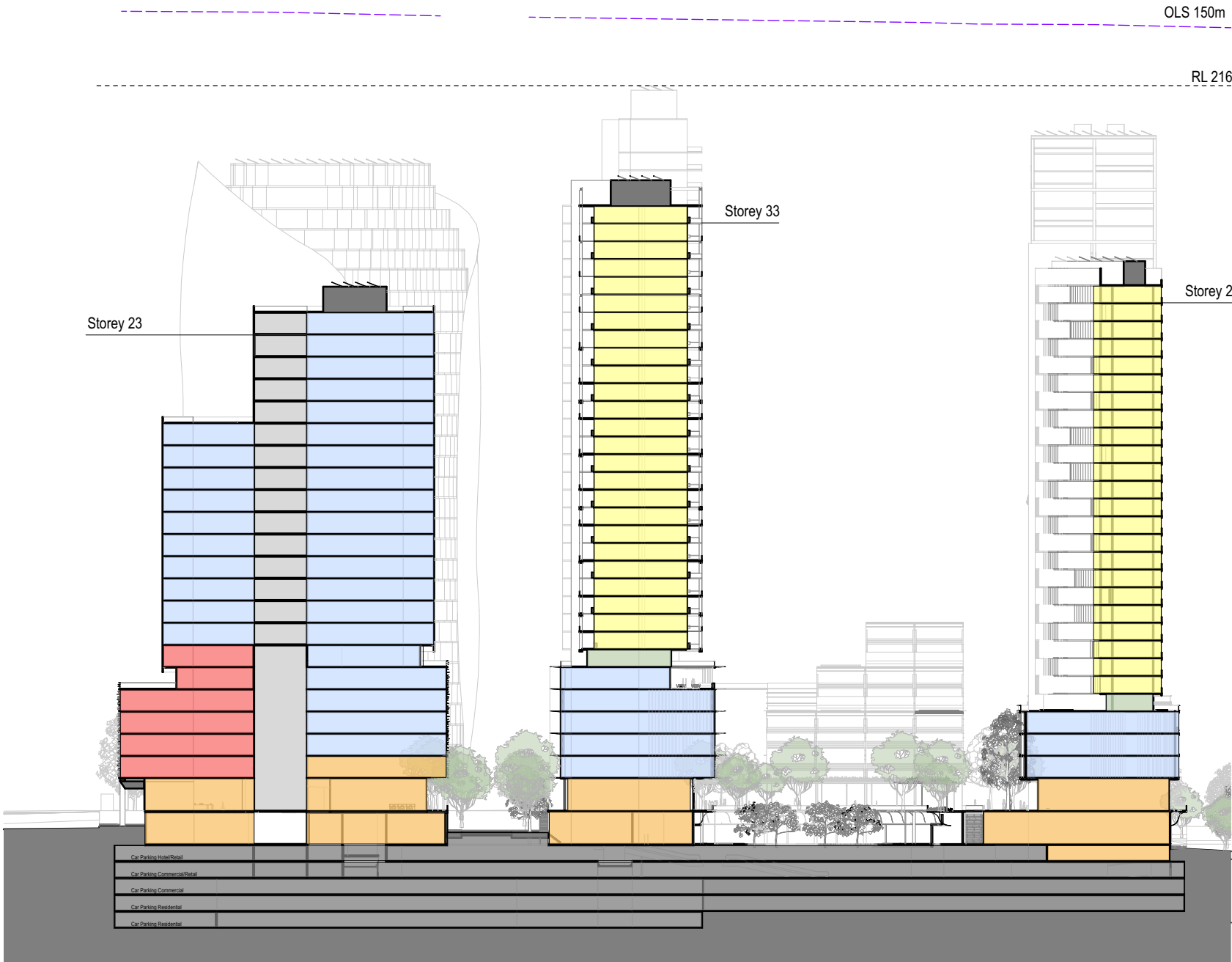


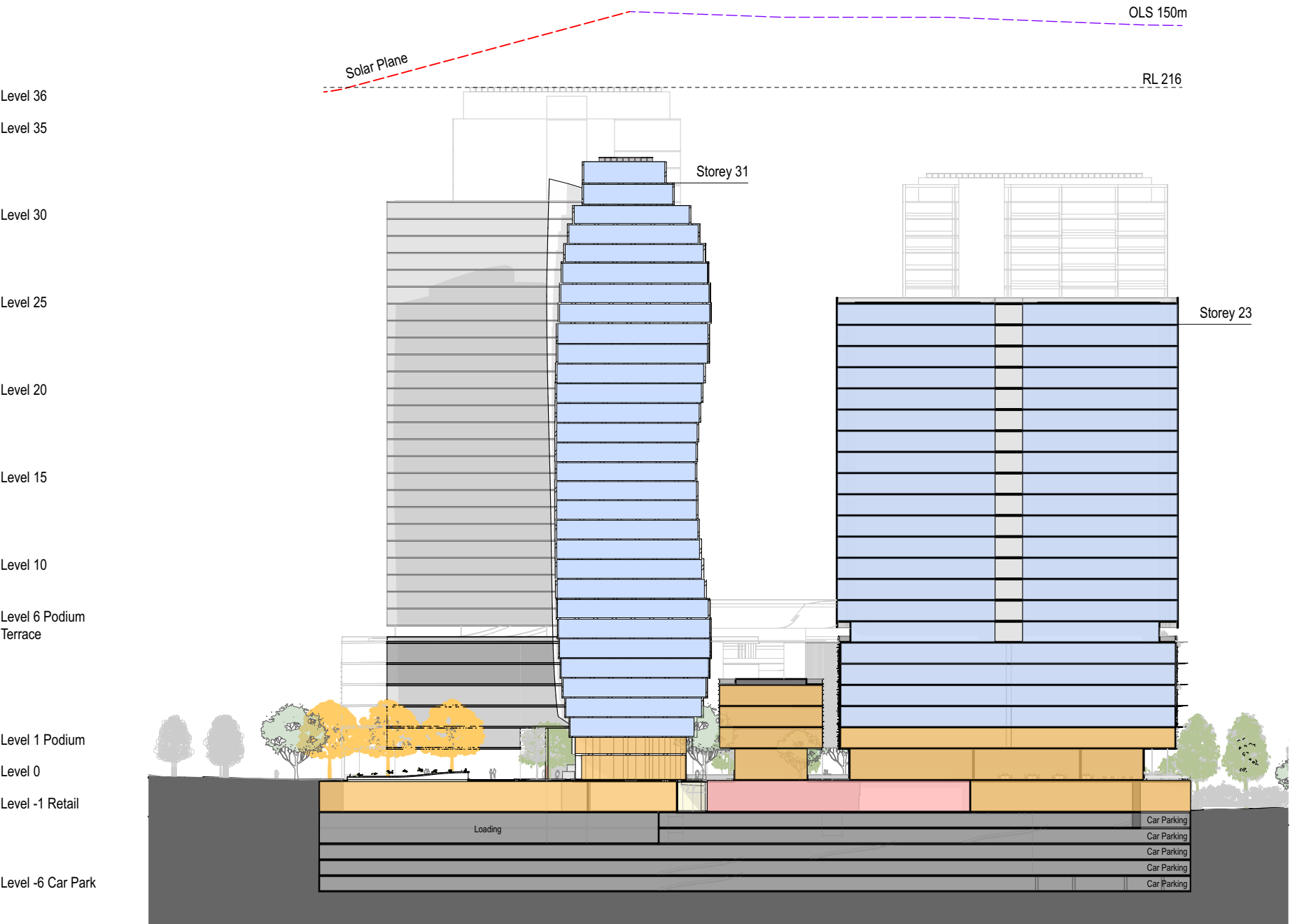
**LEGEND**

- RESIDENTIAL
- RESIDENTIAL-LOBBY/ SHARED SPACES
- COMMUNITY / EDUCATION / COLLABORATION
- OFFICE
- RETAIL - MAJOR/ MINI MAJOR/ DELIVERY CENTRE
- RETAIL - SPECIALITY/ OTHER
- HOTEL







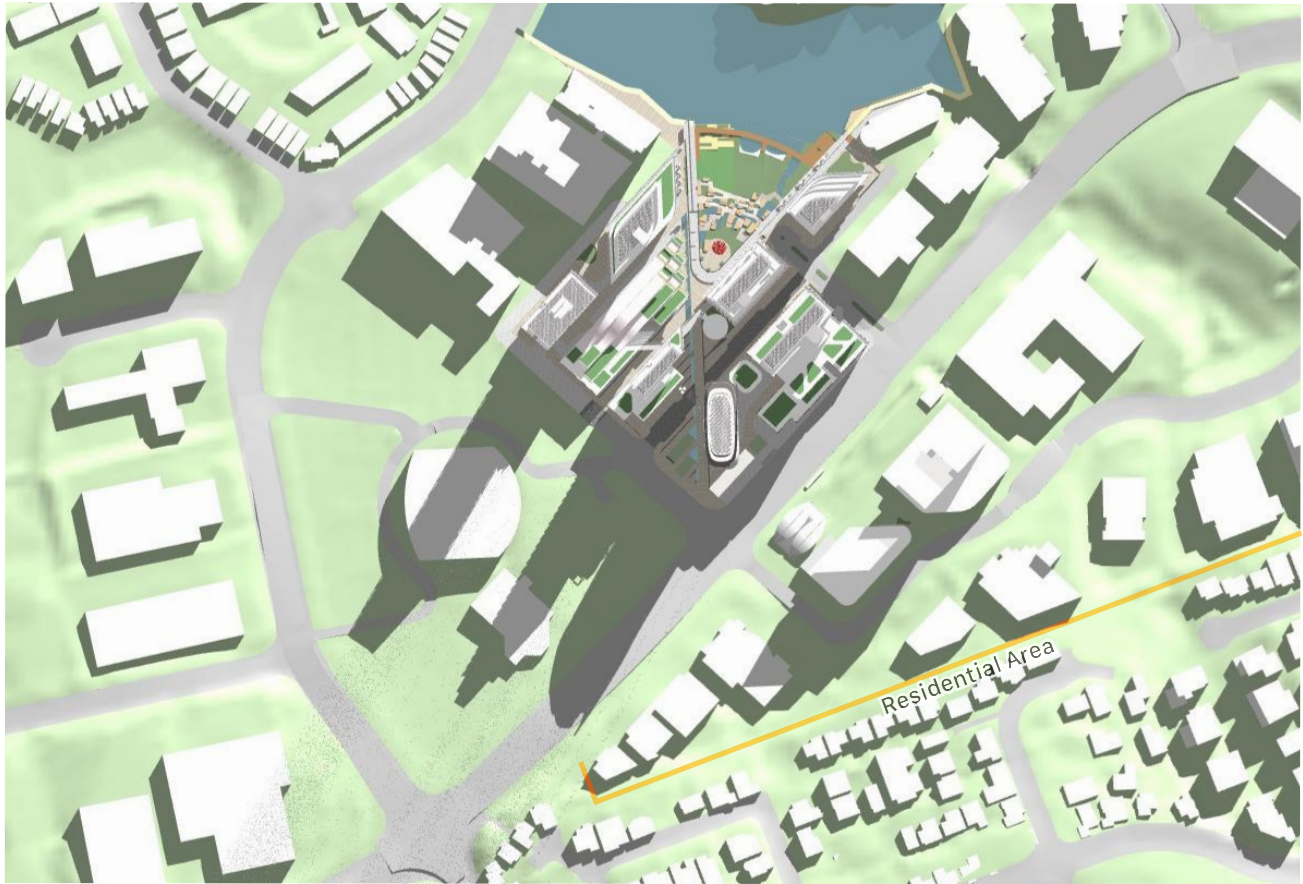


- LEGEND**
- RESIDENTIAL
  - RESIDENTIAL- LOBBY/ SHARED SPACES
  - COMMUNITY / EDUCATION / COLLABORATION
  - OFFICE
  - RETAIL - MAJOR/ MINI MAJOR/ DELIVERY CENTRE
  - RETAIL - SPECIALITY/ OTHER
  - HOTEL

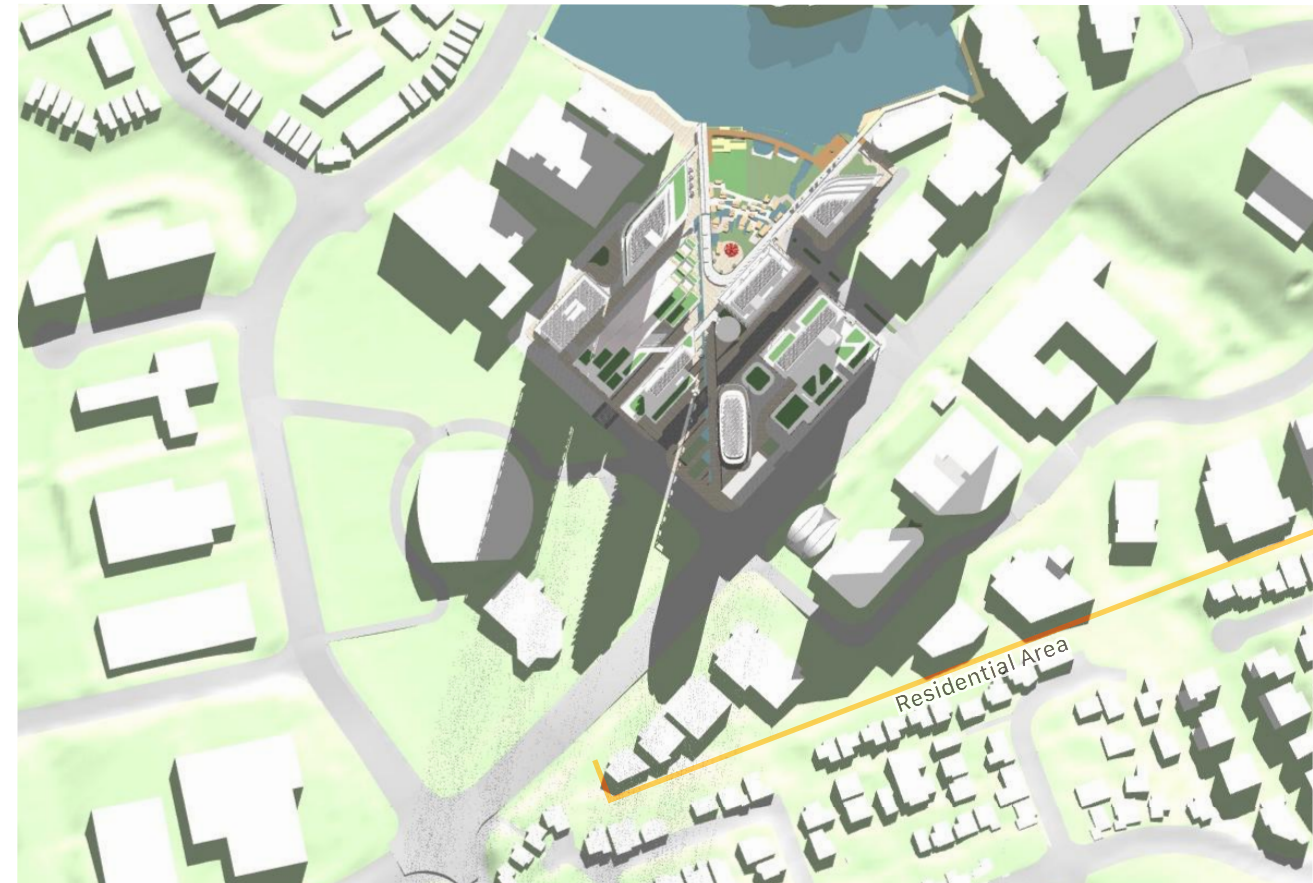




21st June 9am



21st June 10am



21st June 11am







21st June 12pm



21st June 1pm



21st June 2pm



21st June 3pm







Architectural rendering of a modern urban plaza. The scene features a multi-story building with a facade of vertical wooden slats and large glass windows. The ground floor is a wide, paved pedestrian area with a curved path, lined with trees and a low wooden wall. People are walking, sitting on benches, and interacting in the space. The lighting is warm, suggesting dusk or dawn.

**fjstudio**  
formerly fjmtstudio

**Sydney**

Level 1, 70 King Street  
NSW 2000 Australia  
t + 61 2 9251 7077

**Melbourne**

Level 2, 56 Hardware Lane  
VIC 3000 Australia  
t + 61 3 9604 2500

**UK**

Level 1, 8 St Aldates  
United Kingdom OX 1 1BS  
t + 44 1865520 420

Find us on Instagram and LinkedIn: @fjstudio

[www.fjstudio.com](http://www.fjstudio.com)

Francis-Jones Carpenter Pty Ltd ABN 28 101 197 219  
Nominated Architects NSW Richard Francis-Jones 5301 Elizabeth Carpenter 6141  
Nominated Architects VIC Richard Francis-Jones 15505 Geoff Croker 50972